

# EXPO 2015

## CONSTRUCTION SUPERVISION

MILAN, ITALY

MM



**CLIENT:**

EXPO 2015

**ESTIMATED COST:**

\$ 2 Billion

**COMPLETION DATE:**

2015

**SERVICES PROVIDED:**

Claims Management & Dispute Resolution  
Commissioning Services  
Design Review Services  
Design & Build  
Health & Safety Management  
Infra-Power & Communication  
Infra-Special Projects  
Infra-Transportation  
Infra-Water & Environment  
Landscape Projects  
Lighting Design  
Master Planning & Urban Design  
Pre-Tendering Services  
Project & Construction Management  
Sustainability

MM SpA was appointed by the Expo 2015 Organising Committee as the Structural and Infrastructure Designer, as well as Overall Construction Site Supervisor and Site General Officer. The Expo Milano 2015 site covered 110 ha. with 9,500 contractors working on it for 3.5 years and a peak of more than 10,000 workers per day.

The area hosted more than 5,000 events during the 6 months of the exhibition.

MM engineers played a pivotal role in the success of Expo 2015, both in the very beginning of the design process and during the supervision and coordination of the whole construction site.

MM outlined a particular project and management approach, which took into consideration all issues arising from the complexity of a mega event development - size, large number of stakeholders and parties involved, interference from neighbouring sites, and management of continuous on-site changes and improvements.

# EXPO 2015

## CONSTRUCTION SUPERVISION

MILAN, ITALY



10 \*Located Off Site

**1** SHADE STRUCTURES & DECUMANUS



**2** CARDO AND PIAZZA ITALIA



**3** CHILDREN PARK



**4** F&B STRUCTURES



**5** CLUSTER ARID ZONE



**6** SIDRA MEDICAL & RESEARCH CENTER



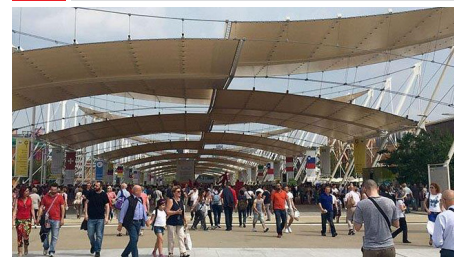
**7** CLUSTER CEREALS



**8** CLUSTER COFFEE



**9** DECUMANUS MAIN CONCOURSE

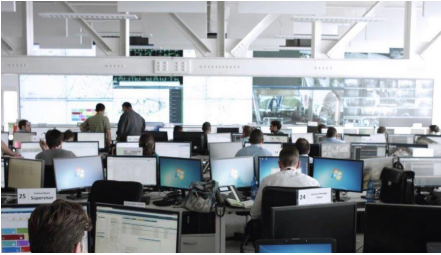


# EXPO 2015

## CONSTRUCTION SUPERVISION

MILAN, ITALY

**10** EXPO COMMAND CENTER



**11** FUTURE FOOD DISTRICT



**12** LIEBESKIND STATUES



**13** MEDITERRANEAN HILLS



**14** ONG PAVILLION



**15** AREAL VIEW OF DECUMANO AND EXPO CENTER



# EXPO 2015

## CONSTRUCTION SUPERVISION

MILAN, ITALY



Being liable for numerous and varied tasks during the planning and construction stages - supporting the Organiser on guidelines and procedures drafting, checking the consistency of the overall construction timeline with the contractors plans, identifying and implementing recovery solutions in case of delays or claims, and many other quality, technical and procedural issues - MM successfully dealt with schedule planning, cost control, and compliance with BIE directions, local regulations and international standards.

The smart city planned and raised for Expo Milano 2015 required a complex infrastructure network and a large variety of buildings and structures, such as exhibition & convention centers, service areas, corporate pavilions, gates, and intermodal connection terminals with access to an urban public transport system.

The Expo Milano 2015 site covered 110 ha. with 9,500 contractors working on it for 3.5 years and a peak of more than 10,000 workers per day.

